

# Genetic evidence for the effect of a postglacial population expansion on the phylogeography of a North American songbird

Borja Milá<sup>1\*</sup>, Derek J. Girman<sup>1</sup>, Mari Kimura<sup>1</sup> and Thomas B. Smith<sup>1,2</sup>

<sup>1</sup>Center for Tropical Research and Department of Biology, San Francisco State University, 1600 Holloway Avenue, San Francisco, CA 94132, USA (borjam@excite.com, tsmith@sfsu.edu)

<sup>2</sup>Center for Population Biology, University of California, Davis, CA 95616, USA

Phylogeographical studies of Nearctic songbirds conducted to date have yielded unexpectedly low levels of genetic differentiation and weak phylogeographical structure in mitochondrial DNA lineages as compared with species studied in Neotropical areas. Factors leading to this pattern may include (i) gene flow, (ii) population expansions from bottlenecked populations, and (iii) selective sweeps. Here we provide evidence for the role played by Pleistocene postglacial population expansions on the phylogeography of MacGillivray's warbler (*Oporornis tolmiei*), a long-distance migratory bird. Samples from 12 breeding localities in the temperate USA were compared with those from two localities in north-eastern Mexico. The former showed evidence of a Late Pleistocene population expansion as indicated by low haplotype and nucleotide diversity, a star-like phylogeny of alleles, and a mismatch distribution indicating a sudden increase in effective population size. By contrast, the Mexican population showed high levels of genetic diversity and a mismatch distribution as expected for a population unaffected by sudden demographic change. Haplotypes from the two regions formed two distinct phylogroups which separated roughly one million years ago according to a conventional molecular clock for songbirds. This study provides support for the Pleistocene expansion hypothesis in MacGillivray's warbler and suggests that postglacial expansion of bottlenecked populations is responsible for the lack of variation and structure reported for most North American songbird species.

**Keywords:** genetic diversity; MacGillivray's warbler; phylogeography; Pleistocene; songbirds; speciation

## 1. INTRODUCTION

Patterns of geographical differentiation at the molecular level may reveal valuable information on underlying evolutionary processes and past demographic events. With few notable exceptions (Avice & Nelson 1989; Girman *et al.* 2000; Zink 1994), studies of intraspecific phylogeographical patterns in Nearctic songbirds have yielded markedly low levels of genetic differentiation and a weak phylogeographical structure in mitochondrial DNA (mtDNA) lineages (Avice *et al.* 1988; Ball & Avice 1992; Buerkle 1999; Zink 1997). Low levels of genetic differentiation have been found even in species showing relatively high levels of phenotypic variation (Ball *et al.* 1988; Greenberg *et al.* 1998; Seutin *et al.* 1995; Zink & Dittman 1993a,b). These results are in contrast to patterns found in Neotropical bird species, where relatively high levels of mitochondrial genetic differentiation and a strong phylogeographical pattern have been documented (Bates *et al.* 1999; Caparella 1988; Escalante-Pliego 1991; Klein & Brown 1994; Peterson *et al.* 1992; Seutin *et al.* 1994).

Several factors have been proposed to explain the relative lack of structure and phylogeographical signal in songbirds of temperate latitudes. Assuming similar mtDNA mutation rates across songbird taxa (Klicka & Zink 1997), the absence of genetic structure in the mito-

chondrial genome across a species' range could be due to (i) gene flow among geographically distant populations (Edwards 1993; Zink 1994), (ii) historical demographic events such as range expansions from bottlenecked populations (Rogers 1995), or (iii) range-wide selective sweeps, wherein a given haplotype favoured by selection spreads across the species range (Maruyama & Birky 1991). Because all three factors may produce a similar pattern of haplotype variation (namely the presence of a single or a few widely distributed shared alleles accompanied by other, lower-frequency alleles), distinguishing among alternative hypotheses has proven difficult, and the relative importance of each factor in shaping current phylogeographical patterns remains a topic of debate (Zink 1997).

Recently, habitat contractions caused by Pleistocene glacial cycles across temperate regions have been proposed as a major process in reducing genetic diversity in northern latitudes (Hewitt 1996; Merilä *et al.* 1997; Rising & Avice 1993). According to this hypothesis, loss of allelic diversity due to genetic drift in bottlenecked refugial populations would have been followed by rapid range expansions northward as ice sheets receded. If such expansions occurred too recently for mtDNA to accumulate point mutations, low genetic diversity and weak phylogeographical patterns would be observed today. A testable prediction of this Pleistocene expansion hypothesis is that populations that were not affected by glacial habitat contractions—such as those in tropical or subtropical latitudes—should show higher levels of genetic

\*Author and address for correspondence: Department of Biology, San Francisco State University, 1600 Holloway Avenue, San Francisco, CA 94132, USA.

diversity and subdivision than those in northern populations, and similar to those found in tropical species. However, most studies have focused on species or populations with current distributions restricted to temperate North America and have not included populations to the south. Because no intraspecific north–south comparison has been attempted, the relative importance of the Pleistocene expansion hypothesis to the phylogeography of North American birds has been difficult to assess.

Temperate species whose ranges include breeding populations in southern (tropical to subtropical) latitudes provide an excellent opportunity to test the Pleistocene expansion hypothesis. Here we examine mtDNA variation across the range of MacGillivray's warbler (*Oporornis tolmiei*), a long-distance migratory songbird whose breeding distribution comprises most of western North America (from the Pacific to the Rocky Mountains, and from south-eastern Alaska to southern California and central New Mexico), including a small and isolated but thriving breeding population in north-eastern Mexico (figure 1a) (Pitocchelli 1995). This population is also migratory and lies just north of the species' wintering grounds, which span northern Mexico south through Central America (Howell & Webb 1995), and is separated from the rest of the breeding range by over 1000 km.

We predict that populations that experienced genetic bottlenecks as a result of Pleistocene habitat contractions should show evidence of low historical effective population size as indicated by low haplotype and nucleotide diversity (Birky *et al.* 1983). Subsequent postglacial expansion over the present range would result in (i) a star-like phylogeny of haplotypes with few high-frequency ancestral haplotypes and numerous low-frequency alleles separated from the ancestral ones by a few mutational steps (Slatkin & Hudson 1991), (ii) low levels of genetic subdivision within and among populations, and (iii) a Poisson distribution of pairwise nucleotide differences among haplotypes indicating a sudden increase in effective population size (Rogers & Harpending 1992). By contrast, refugial populations in the south unaffected by Pleistocene habitat contractions should show higher levels of nucleotide diversity, stronger phylogeographical structure, and a multimodal distribution of pairwise nucleotide differences indicating long-term demographic stability.

## 2. MATERIAL AND METHODS

We examined mtDNA sequence variation in the cytochrome *b* gene and the control region from a total of 177 individual MacGillivray's warblers from 14 locations throughout the species' breeding range (figure 1a). Individual birds were captured with mist-nets during the breeding season, and blood and/or feather samples were collected in the field in addition to information on age, sex and reproductive condition.

Whole genomic DNA was extracted from blood or feather samples using a commercially available Qiagen<sup>TM</sup> (Valencia, CA, USA) kit. The polymerase chain reaction was used to isolate and amplify a 316 base pair fragment of the cytochrome *b* gene and 339 base pairs of the control region in the mitochondrial genome (Saiki *et al.* 1988), with primer pairs MVZ03' and MVZ04' (modified by C. Cicero and N. Johnson, University of California at Berkeley, USA, from Kocher *et al.* (1989)), and H417 and LGL2 (Tarr 1995), respectively. All samples were

sequenced in both directions in an ABI Prism 377 automated sequencer (Applied Biosystems, Inc., Foster City, CA, USA). Cytochrome *b* data were obtained from 159 birds and control region sequences were obtained from 122 birds, with 104 individuals having both fragments sequenced. To ensure that sequences were of mitochondrial origin and not nuclear inserts, two individuals for which both blood and feather samples were available were sequenced using both sources of DNA and identical results were obtained. Translation of cytochrome *b* sequences yielded a single amino-acid change in one haplotype and no stop codons.

Estimates of nucleotide diversity ( $\pi$ ) and haplotype diversity ( $h$ ) were obtained with the program Arlequin (Schneider *et al.* 1996). Phylogenetic relationships among haplotypes were reconstructed with the neighbour-joining algorithm in the program MEGA v.1.02 (Kumar *et al.* 1993) and with maximum parsimony using PAUP\* (Swofford 1999). A Kimura two-parameter model (Kimura 1980) was used to estimate genetic distances among cytochrome *b* haplotypes, and a gamma distribution ( $\alpha = 0.5$ ) of Tamura–Nei distances was assumed for the control region sequences (Kumar *et al.* 1993; Tamura & Nei 1993). Branch support was tested by performing 500 bootstrap replicates. Minimum-spanning trees, in which haplotypes are the nodes of a network rather than the terminal tips of a tree (Stanley *et al.* 1996), were constructed from absolute distance values using the program NTSYS (Rohlf 1993). Estimates of sequence divergence between populations were corrected for polymorphism within populations using Nei's genetic distance (Nei 1987; Wilson *et al.* 1985).

To estimate population structure we conducted an analysis of molecular variance (AMOVA) using the program Arlequin. AMOVA uses the frequencies of haplotypes and the number of mutations between them to test the significance of the variance components associated with various hierarchical levels of genetic structure (within populations, among populations within groups, and among groups) by means of non-parametric permutation methods (Excoffier *et al.* 1992). Sampling sites were first treated as individual 'populations' to test for overall genetic subdivision. In order to identify larger-scale genetic populations, sites were then grouped to maximize among-group variance (i.e.  $\phi_{ct}$ -values). Those groupings that maximized values of  $\phi_{ct}$  and were significantly different from distributions of individuals generated from 1000 random permutations of the DNA sequences, were assumed to reflect the most probable geographical subdivisions (Excoffier *et al.* 1992).

To infer the demographic history of populations, we compared mismatch distributions of pairwise nucleotide differences among control region haplotypes with expectations of a sudden-expansion model (Rogers 1995) using the programs Arlequin (Schneider *et al.* 1996) and MISMATCH (v. 4–3, provided by A. \* Rogers, University of Utah, USA). Variation in cytochrome *b* was too low for the model to be applied. The model estimates three parameters of interest: the effective population size before the expansion ( $N_0$ ), the present population size ( $N_1$ ), and the time elapsed between the two ( $t$ ).  $N_0$  was estimated as  $\theta_0 = 2N_0\mu$ , and  $N_1$  as  $\theta_1 = 2N_1\mu$ , where  $u = 2\mu k$ , where  $\mu$  is the mutation rate and  $k$  is the length of the sequence.  $\theta_0$  was estimated as  $\sqrt{(v-m)}$ , where  $m$  and  $v$  are, respectively, the observed mean and variance of the pairwise sequence differences. To estimate the time from  $N_0$  to the present, we used  $\theta = 2ut$ , where  $t$  is the time elapsed between the initial population and the current population, and  $\theta$  was estimated as  $m - \theta_0$  (Rogers & Harpending 1992). Statistical significance of a population expansion was tested using Fu's  $F_s$ -test of

Table 1. Sampling sites, mtDNA haplotypes and sample sizes

sampling sites	cytochrome <i>b</i> haplotypes <sup>a</sup>	no. of individuals	no. of haplotypes	control-region haplotypes <sup>a</sup>	no. of individuals	no. of haplotypes
USA sites	—	116	7	—	101	33
Alaska	A(6), G	7	2	b, d, f, j, m, w, x	7	7
North California	A(11), G, H, I	14	4	b(4), bb, c, cc, d, h	9	6
East California	A(12), H(2)	14	2	b(4), c, d, ff, gg(2), u	10	6
South California	A(7)	7	1	a, b(5), d, n(3)	10	4
Colorado	A(7)	7	1	d, f, g(5), t	8	4
East Oregon	A(4)	4	1	b, d, g(2)	4	3
South Oregon	A(8), B, H, I, J	12	5	a, aa, b(5), bb, c(2), dd, l, z(2)	14	8
Idaho	A(9)	9	1	c, d(2), g, hh, ii, jj, kk, r	9	8
Montana	A(11), B(3)	14	2	b(3), d(4), g(2), l(3), v	13	5
Utah	A(6), K	7	2	c, g(3), l, w	6	4
Washington	A(14), G	15	2	b(2), e, f, g(2)	6	4
Wyoming	A(6)	6	1	g, s, o, d, y	5	5
Mexican sites	—	43	11	—	21	7
Coahuila	A(2), C, D(11), E(2), L(3), Q(3)	22	6	ee, nn, p(4), q(2)	8	4
Nuevo León	C(5), D(7), E(2), F, L, M(2), N, O, P	21	9	k, ll, mm, p(4), q(6)	13	5
totals	—	159	17	—	122	40

<sup>a</sup> Figures in parentheses indicate the number of individuals carrying haplotype if more than one.

neutrality (Fu 1997), which detects departures from neutrality in scenarios characterized by an excess of rare alleles and young mutations in non-recombining sequences. Large negative values of  $F_s$  indicate an excess of recent mutations and reject population stasis (Fu 1997).

### 3. RESULTS

A total of 17 cytochrome *b* and 40 control region haplotypes were found in the breeding range of MacGillivray's warbler (table 1). The cytochrome *b* haplotype *A* predominated in USA populations, with other haplotypes appearing in lower frequencies. A similar pattern was seen for control region data, where haplotypes *b*, *d*, and *g* were found in higher frequencies than the rest and were shared by many populations. Furthermore, low-frequency haplotypes differed from the high-frequency ones by one or two base pairs, giving rise to a star-like phylogeny of haplotypes (figure 1*b,c*). None of the haplotypes detected in north-eastern Mexico were found in the USA populations except for cytochrome *b* haplotype *A*, which was found in two individuals from the Coahuila sample (one of which carried control-region haplotype *ee*).

Haplotypes found in the northern (USA) and the southern (north-eastern Mexico) populations formed two highly divergent phylogroups according to a neighbour-joining reconstruction (figure 2). Trees produced with maximum parsimony had similar topologies, and bootstrap values for the node separating the USA and Mexican clades were 81 and 88 for cytochrome *b* and control region, respectively. Given the marked divergence between haplotype *A* and the other haplotypes found in Mexico, the two individuals detected in Coahuila carrying haplotype *A* were considered to represent recent introgression from the north. For cytochrome *b* data, average divergence between northern (*A*, *B*, *G*, *H*, *I*, *J* and *K*) and southern (*C*, *D*, *E*, *F* and *L*, *M*, *N*, *O*, *P*)

haplotypes was 0.0241 (s.d. = 0.00462, range: 0.0128–0.0327). When divergence between the two phylogroups was corrected for intrapopulation polymorphism, the divergence value among the two phylogroups was 0.018. When the two individuals carrying haplotype *A* in the Mexican group were excluded, the divergence estimate was 0.019. Conventional avian cytochrome *b* molecular clock calibrations (2% per million years) (Quinn 1992; Tarr & Fleischer 1993) suggest that the two phylogroups separated roughly one million years ago.

Analysis of population subdivision revealed significant levels of genetic subdivision in the breeding range of MacGillivray's warbler ( $\phi_{st} = 0.74$ ,  $p < 0.001$ ). When populations were divided into two main groups (USA and Mexico), over 89% of the overall variance was explained by among-group variation (table 2). Variation among populations within those groups and among individuals within populations was low as indicated by low  $\phi_{sc}$ - and  $\phi_{st}$ -values, respectively.

Marked differences in genetic diversity were found between USA and Mexican populations. For cytochrome *b* data, average haplotype diversity ( $h$ ) for the Mexican populations was over twice that found in the USA populations (table 3). Average nucleotide diversity ( $\pi$ ) was higher in the Mexican population than in the USA populations by an order of magnitude. These differences were maintained when the two individuals carrying haplotype *A* in the Coahuila (Mexico) population were excluded from the analysis. Without these individuals, the values for  $h$  and  $\pi$  were  $0.776 \pm 0.056$  and  $0.005 \pm 0.003$ , respectively.

The mismatch distribution from the USA population showed the smooth wave predicted for a population that has undergone a sudden demographic expansion (Rogers & Harpending 1992), while that of the Mexican population was rough and resembled the distribution expected from a non-growing population (Slatkin & Hudson 1991)

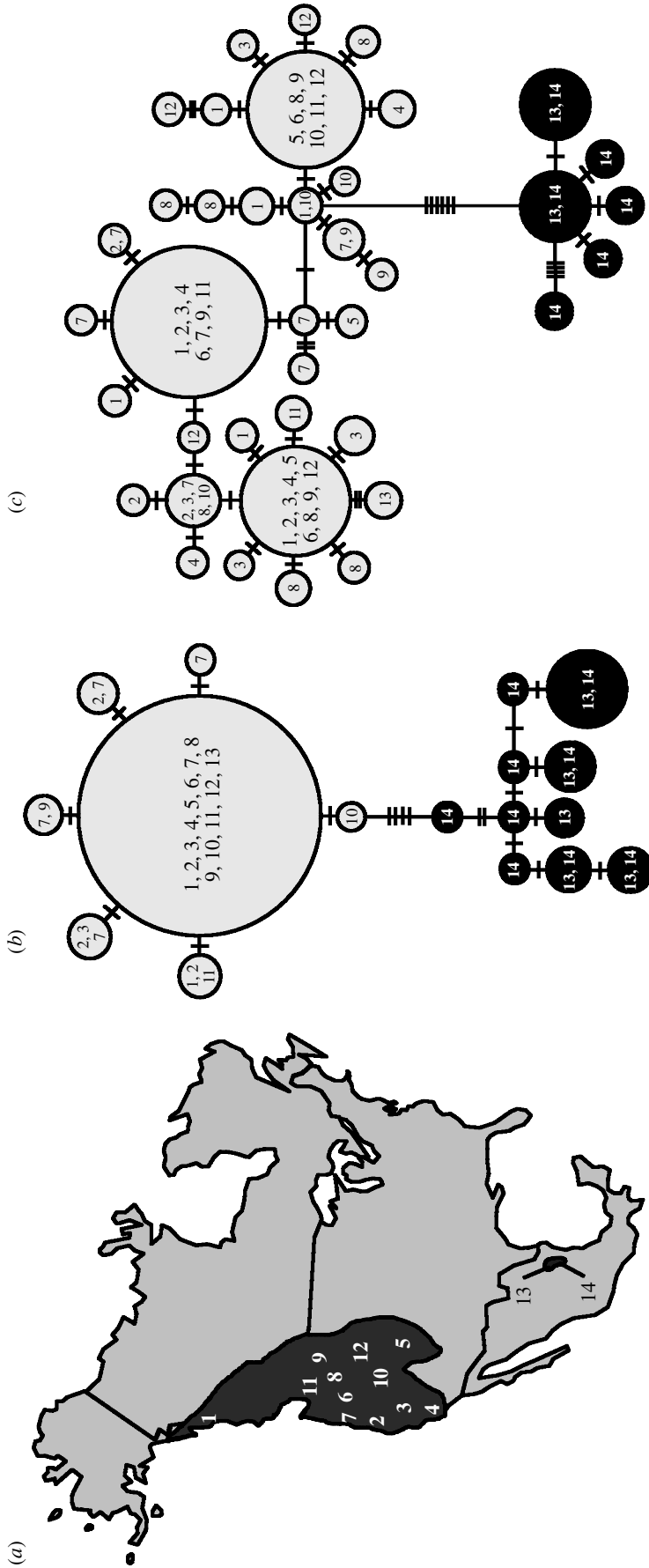


Figure 1. (a) Sampling localities across MacGillivray's warbler breeding range included in the study: (1) Juneau, Alaska; (2) Mount Shasta, northern California; (3) Sierra Nevada, California; (4) Big Bear Lake, southern California; (5) Brighton, Colorado; (6) Willamette National Forest, Oregon; (7) Grants Pass, Oregon; (8) Yellowstone National Park, Wyoming and Targhee National Forest area, Idaho; (9) Flathead, Montana; (10) Mount Timpanogos, Utah; (11) Wenatchee National Forest, Washington; (12) Lander, Wyoming, in the USA; and (13) San Antonio de las Alazanas, Coahuila; (14) Cerro Potosí, Galeana, Nuevo León, in Mexico. The shaded area indicates MacGillivray's warbler breeding range (wintering range not shown). See table 1 for sample sizes and haplotype designations. (b) Minimum-spanning tree of cytochrome *b* haplotypes and (c) control region haplotypes. Light-grey shaded circles represent haplotypes found in the USA sites and black circles represent haplotypes found in the Mexican sites. Bars across branches indicate single nucleotide changes (branches not drawn to scale). The size of each circle is proportional to the frequency of the haplotype it represents, and numbers within circles indicate the sampling localities where the haplotypes were detected.

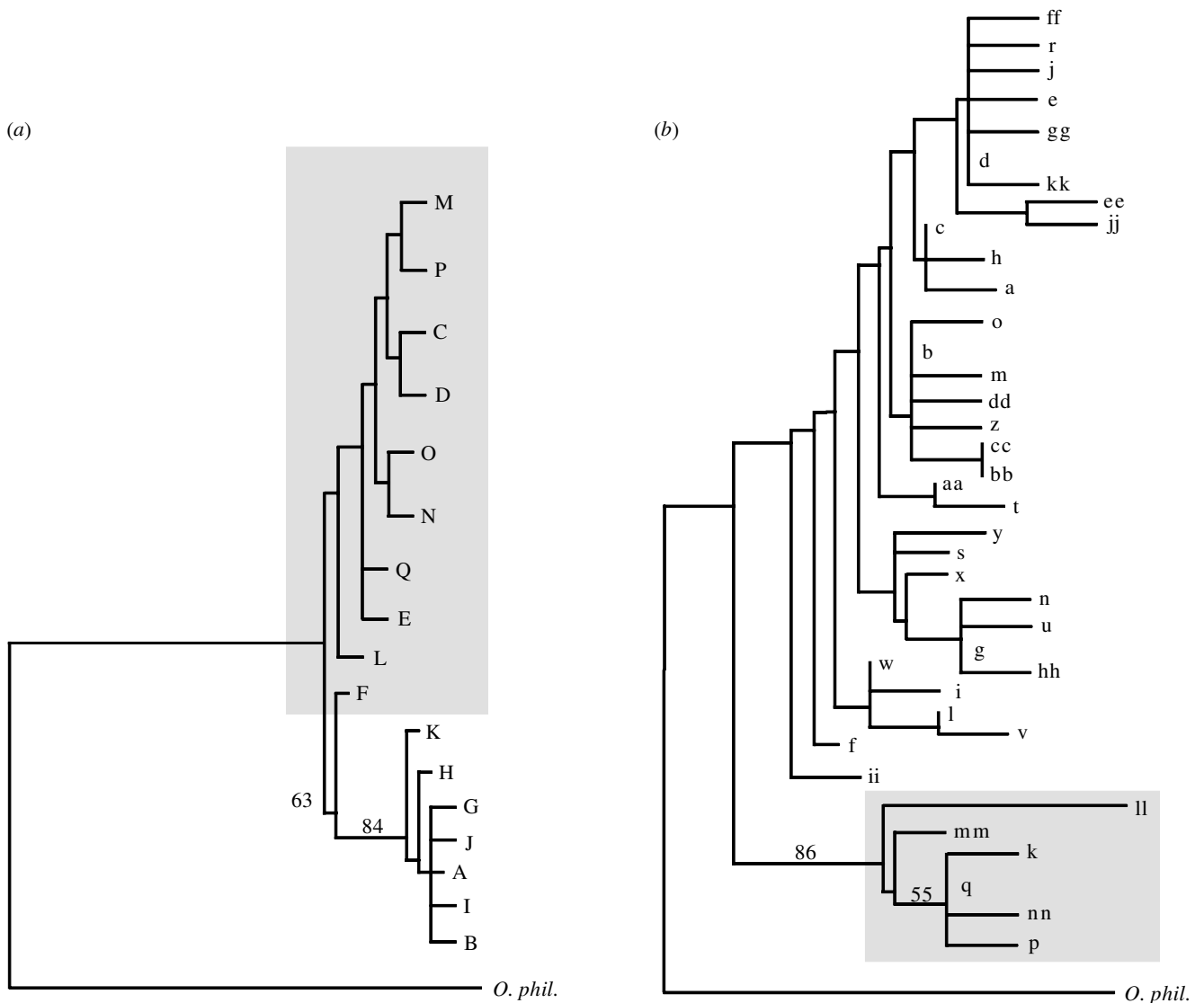


Figure 2. Neighbour-joining trees of (a) cytochrome *b* and (b) control region haplotypes from USA and Mexican populations of MacGillivray's warbler with mourning warbler (*O. philadelphia*) as an outgroup. Haplotypes found in the Mexican sites only are shaded. Bootstrap values greater than 50% are indicated on tree branches.

(figure 3). Parameter estimates obtained using the method described by Rogers (1995) were  $\theta_0 = 0.3$ ,  $\theta_1 = 8.17$ ,  $\tau = 2.454$ , implying that the expansion was of the order of a 27-fold increase in female effective population size (from  $N_0 = 1495$  to  $N_1 = 40710$ ) and took place approximately 12 500 years before present. It is notable that the estimate of the time to the expansion coincides with the recession of the ice sheets following the last glacial maximum, 18 000 years ago (Webb & Bartlein 1992). Fu's test supported the demographic expansion of the USA population rejecting stasis at the 0.05 significance level with an  $F_s$ -value of  $-20.457$ .

#### 4. DISCUSSION

##### (a) Pleistocene effects on songbird speciation

The relative importance of Pleistocene glacial cycles in promoting divergence and speciation in North American songbird taxa is currently under debate (Arbogast & Slowinski 1998; Avise & Walker 1998; Klicka & Zink

1997, 1999). Our data contribute to a body of evidence suggesting that Pleistocene events played an important role in the differentiation and divergence of songbird populations. According to prevailing molecular clock calibrations, divergence values reported here between the two main phylogroups in MacGillivray's warbler indicate that cladogenesis in this species took place roughly one million years before present (for caveats of molecular clocks, see Klicka & Zink (1997)). These divergence values are significantly higher than those found among some pairs of congeners (e.g. Bermingham *et al.* 1992; Rising & Avise 1993; Zink & Avise 1990; Zink & Dittman 1993*b*), yet whether the USA and Mexican phylogroups have achieved species status depends on taxonomic definitions that will not be addressed here. However, the timing of the divergence between the two groups, coupled with the dramatic effect of a single glacial cycle on the phylogeographical structure of the species, points to the Pleistocene as an important period for differentiation and divergence in this taxon.

Table 2. *AMOVA of MacGillivray's warbler populations divided into USA and Mexican groups*

source of variation	degrees of freedom	variance components	$\rho$	percentage of variation
among groups	1	$\phi_{ct} = 2.9781$	< 0.02	89.37
among populations within groups	12	$\phi_{sc} = -0.00718$	< 0.001	-0.22
within populations	145	$\phi_{st} = 0.2801$	< 0.001	10.85

Table 3. *Haplotype (h) and nucleotide ( $\pi$ ) diversity indices calculated from cytochrome b data*

sampling sites	$h$	$\pi$
USA sites	$0.2405 \pm 0.0526$	$0.000806 \pm 0.001006$
Alaska	$0.2857 \pm 0.1964$	$0.000907 \pm 0.001238$
North California	$0.3956 \pm 0.1588$	$0.001361 \pm 0.001462$
East California	$0.2637 \pm 0.1360$	$0.000837 \pm 0.001096$
South California	0	0
Colorado	0	0
East Oregon	0	0
South Oregon	$0.5758 \pm 0.1634$	$0.002117 \pm 0.001960$
Idaho	0	0
Montana	$0.3626 \pm 0.1302$	$0.001150 \pm 0.001321$
Utah	$0.2857 \pm 0.1964$	$0.000907 \pm 0.001238$
Washington	$0.1333 \pm 0.1123$	$0.000423 \pm 0.000746$
Wyoming	0	0
Mexican sites	$0.7951 \pm 0.0526$	$0.006299 \pm 0.004026$
Coahuila	$0.7273 \pm 0.0868$	$0.006976 \pm 0.004469$
Nuevo León	$0.8429 \pm 0.0572$	$0.005257 \pm 0.003591$

Nevertheless, our results are in agreement with the main conclusions of Klicka & Zink (1997) and contribute to the mounting evidence against the Late Pleistocene origin model (Mengel 1964, 1970), which suggests that the last 250 000 years have been a crucial time for songbird speciation.

#### (b) *Effect of postglacial expansions on MacGillivray's warbler phylogeography*

Population expansions over large continental areas following Pleistocene glacial maxima have been proposed as causes for the lack of variation and phylogeographical structure in several avian species in temperate North America (see the review in Zink 1997) and Europe (Bensch *et al.* 1999; Merilä *et al.* 1997). Patterns of mtDNA variation within the USA populations of MacGillivray's warbler are consistent with expectations of a Pleistocene population expansion over the northern part of the species' range following a period of low female effective population size. The presence of one or a few common, widespread ancestral haplotypes (*A* for cytochrome *b*, and *b*, *d* and *g* for the control region), low haplotype and nucleotide diversity, a star-like phylogeny of alleles, and a Poisson-shaped mismatch distribution of control region haplotypes, are consistent with a demographic expansion from a population of small effective size. By contrast, the mtDNA patterns in the north-eastern Mexican population are consistent with expectations of a population unaffected by sudden demographic change as predicted for a Pleistocene refugium. Haplotype and nucleotide diversity values are higher than in the north, and the

mismatch distribution fits expectations of a population in long-term demographic stability. Data from the north-eastern Mexican populations reveal what are probably pre-expansion patterns of variation and diversity, consistent with those found in Neotropical species examined to date (Bermingham *et al.* 1997).

While we cannot definitively reject the possibility of a selective sweep to explain the observed patterns of genetic variation, we believe selection is unlikely. A generalized pattern of decreasing haplotype diversity with increasing latitude has been reported across a wide range of taxa (Hayes & Harrison 1996; Hewitt 1996; Merilä *et al.* 1997). Because selective pressures are unlikely to be the same across those taxa, we consider the occurrence of selective sweeps to be a less parsimonious explanation than a post-glacial expansion.

The role of gene flow in shaping the pattern of variation found in the northern populations of MacGillivray's warbler and other avian species remains unclear. A post-glacial population expansion would probably mask any geographical genetic structure for a long time, making it difficult to detect current and past levels of gene flow among populations. The presence of several unique haplotypes at each of the two Mexican sites (*F*, *M*, *N*, *O* and *P* in Nuevo León, and *Q* in Coahuila), and the fact that the two sampling sites are 30 km from each other (a very short distance for a migratory bird), suggest that current levels of gene flow, at least for these two populations, might be low. However, larger samples will be necessary to fully address this question. In any case, the present study shows that caution should be used when

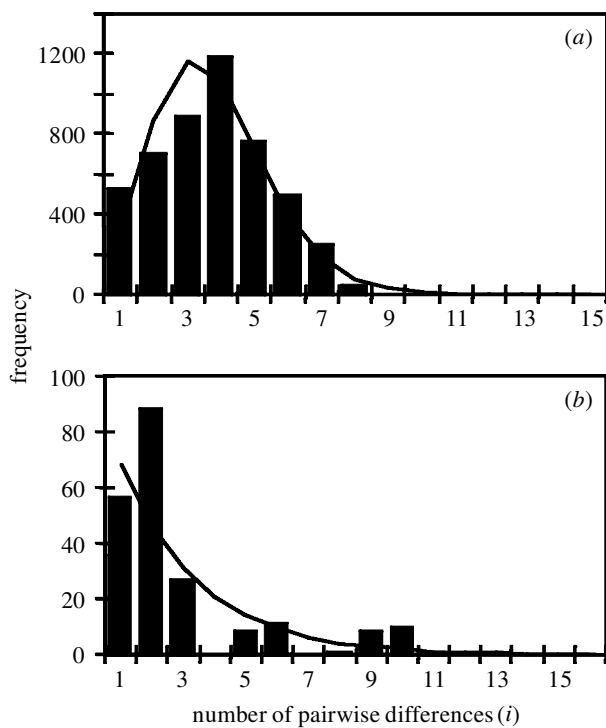


Figure 3. Distribution of pairwise nucleotide differences among members of (a) USA populations and (b) north-eastern Mexican populations of MacGillivray's warbler. Black histograms represent the observed differences, while thin lines represent the ideal distributions predicted by the model.

interpreting patterns characterized by extensive sharing of haplotypes among populations (especially in temperate regions), so as to avoid mistaking the ubiquity of ancestral post-expansion haplotypes for evidence of gene flow.

The intraspecific test of the Pleistocene expansion hypothesis presented here provides strong evidence for the importance of Pleistocene events in shaping current patterns of genetic diversity and structure in MacGillivray's warbler. Our study also suggests that postglacial expansion of bottlenecked populations might be responsible for the lack of variation and structure reported for most North American species studied to date. Nearctic species with tropical or subtropical populations have the potential to reveal historical patterns of genetic variation and provide crucial insights into general phylogeographical patterns of North American songbird species. Furthermore, when refugial populations harbour large proportions of a species' total genetic diversity and show high levels of differentiation, they represent evolutionarily significant units (Moritz 1994) and may be important targets for conservation efforts.

We thank S. Clegg, K. Holder, K. O'Keefe, W. Rendell, E. Routman, G. Spicer, R. K. Wayne and two anonymous reviewers for comments on the manuscript; D. DeSante and the Institute for Bird Populations, the Monitoring Avian Productivity and Survivorship programme, J. Alexander, G. Ballard, L. Bryant, B. Carlson, M. Carter, A. Cerovski, M. DeAngelo, T. Doyle, D. Gross, T. MacEneaney, A. Oliveras, L. Orozco, A. Pallejá, B. Peck, C. Pohl, C. J. Ralph, C. Reading, K. Ruegg, J. Steele, D. Vroman and J. M. Zolotoff for contributing to the sampling for this study; F. Villaseñor for his help obtaining permits for Mexico; S. Wooding and A. Rogers for helping with data analysis; and the staff and colleagues at San Francisco

State University's Conservation Genetics Laboratory for their support and guidance. This work was supported by a student award from the Percy Sladen Fund of the Linnean Society of London to B.M., San Francisco State University, and a National Institutes of Health Office of Research on Minority Health grant, US Environmental Protection Agency grant R827109-01-00, and US National Science Foundation grants DEB-9726425 and IRCEB-9977072 to T.B.S.

## REFERENCES

- Arbogast, B. & Slowinski, J. 1998 Pleistocene speciation and the mitochondrial DNA clock. *Science* **282**, 1955a.
- Avise, J. C. & Nelson, W. S. 1989 Molecular genetic relationships of the extinct dusky seaside sparrow. *Science* **243**, 646–648.
- Avise, J. C. & Walker, D. 1998 Pleistocene phylogeographic effects on avian populations and the speciation process. *Proc. R. Soc. Lond. B* **265**, 457–463.
- Avise, J. C., Ball, R. M. & Arnold, A. 1988 Current versus historical population sizes in vertebrate species with high gene flow: a comparison based on mitochondrial DNA lineages and inbreeding theory for neutral mutations. *Mol. Biol. Evol.* **5**, 331–344.
- Ball, R. M. & Avise, J. C. 1992 Mitochondrial DNA phylogeographic differentiation among avian populations and the evolutionary significance of subspecies. *Auk* **109**, 626–636.
- Ball, R. M., Freeman, S., James, F. C., Bermingham, E. & Avise, J. C. 1988 Phylogeographic population structure of red-winged blackbirds assessed by mitochondrial DNA. *Proc. Natl Acad. Sci. USA* **85**, 1558–1562.
- Bates, J. M., Hackett, S. J. & Goerck, J. M. 1999 High levels of mitochondrial DNA differentiation in two lineages of antbirds (*Drymophila* and *Hypocnemis*). *Auk* **116**, 1093–1106.
- Bensch, S., Andersson, T. & Akesson, S. 1999 Morphological and molecular variation across a migratory divide in willow warblers, *Phylloscopus trochilus*. *Evolution* **53**, 1925–1935.
- Bermingham, E., Rohwer, S., Freeman, S. & Wood, C. 1992 Vicariance biogeography in the Pleistocene and speciation in North American wood warblers: a test of Mengel's model. *Proc. Natl Acad. Sci. USA* **89**, 6624–6628.
- Bermingham, E., Seutin, G. & Ricklefs, R. E. 1997 Regional approaches to conservation biology: RFLPs, DNA sequence, and Caribbean birds. In *Molecular genetic approaches to conservation* (ed. T. B. Smith & R. K. Wayne), pp. 104–124. New York: Oxford University Press.
- Birky, C. W., Maruyama, T. & Fuerst, P. 1983 An approach to population and evolutionary genetic theory for genes in mitochondria and chloroplasts, and some results. *Genetics* **103**, 513–527.
- Buerkle, C. A. 1999 The historical pattern of gene flow among migratory and nonmigratory populations of prairie warblers (Aves: Parulinae). *Evolution* **53**, 1915–1924.
- Caparella, A. P. 1988 Genetic variation in Neotropical birds: implications for the speciation process. In *XIX Congressus Internationalis Ornithologici* (ed. H. Ouellet), pp. 1658–1664. University of Ottawa Press.
- Edwards, S. V. 1993 Long-distance gene flow in a cooperative breeder detected in genealogies of mitochondrial DNA sequences. *Proc. R. Soc. Lond. B* **252**, 177–185.
- Escalante-Pliego, B. P. 1991 Genetic differentiation in yellowthroats (Parulinae: *Geothlypis*). In *XX Congressus Internationalis Ornithologici*, pp. 333–343. Christchurch, New Zealand: New Zealand Ornithological Congress Trust Board.
- Excoffier, L., Smouse, P. E. & Quattro, J. M. 1992 Analysis of molecular variance inferred from metric distances among DNA haplotypes: application to human mitochondrial DNA restriction data. *Genetics* **131**, 479–491.
- Fu, Y. X. 1997 Statistical neutrality of mutations against population growth, hitchhiking and background selection. *Genetics* **147**, 915–925.

- Girman, D. J., Kimura, M., Milá, B., Wade, P. & Smith, T. B. 2000 Population structure and the use of molecular markers to link wintering and breeding populations of Wilson's warbler (*Wilsonia pusilla*), a Neotropical migrant. *Mol. Ecol.* (In the press.)
- Greenberg, R., Cordero, P., Droege, S. & Fleischer, R. C. 1998 Morphological adaptation with no mitochondrial DNA differentiation in the coastal plain swamp sparrow. *Auk* **115**, 706–712.
- Hayes, J. P. & Harrison, R. G. 1996 Variation in mitochondrial DNA and the biogeographic history of woodrats (*Neotoma*) of the eastern United States. *Syst. Biol.* **41**, 331–344.
- Hewitt, G. M. 1996 Some genetic consequences of ice ages and their role in divergence and speciation. *Biol. J. Linn. Soc.* **58**, 247–276.
- Howell, S. N. G. & Webb, S. 1995 *A guide to the birds of Mexico and northern Central America*. New York: Oxford University Press.
- Kimura, M. 1980 A simple method for estimating evolutionary rates of base substitutions through comparative studies of nucleotide sequences. *J. Mol. Evol.* **2**, 87–90.
- Klein, N. K. & Brown, W. M. 1994 Intraspecific molecular phylogeny in the yellow warbler (*Dendroica petechia*), and implications for avian biogeography in the West Indies. *Evolution* **48**, 1914–1932.
- Klicka, J. & Zink, R. M. 1997 The importance of recent ice ages in speciation: a failed paradigm. *Science* **277**, 1666–1669.
- Klicka, J. & Zink, R. M. 1999 Pleistocene effects on North American songbird evolution. *Proc. R. Soc. Lond.* **B266**, 695–700.
- Kocher, T. D., Thomas, W. K., Meyer, A., Edwards, S. V., Pääbo, S., Villablanca, F. X. & Wilson, A. C. 1989 Dynamics of mitochondrial DNA evolution in animals: amplification and sequencing with conserved primers. *Proc. Natl Acad. Sci. USA* **86**, 6196–6200.
- Kumar, S., Tamura, K. & Nei, M. 1993 *MEGA—molecular evolutionary genetics analysis*. University Park, PA: Institute of Molecular Evolutionary Genetics, Pennsylvania State University.
- Maruyama, T. & Birky, C. W. 1991 Effects of periodic selection on gene diversity in organelle genomes and other systems without recombination. *Genetics* **127**, 449–451.
- Mengel, R. 1964 The probable history of species formation in some northern wood warblers (Parulidae). *Liv. Bird* **3**, 9–43.
- Mengel, R. M. 1970 The North American Great Plains as an isolating agent in bird speciation. *Univ. Kans. Dept Geol. Spec. Publ.* **3**, 279–340.
- Merilä, J., Bjorklund, M. & Baker, A. 1997 Historical demography and present day population structure of the greenfinch, *Carduelis chloris*—an analysis of mtDNA control-region sequences. *Evolution* **51**, 946–956.
- Moritz, C. 1994 Defining 'evolutionary significant units' for conservation. *Trends Ecol. Evol.* **9**, 373–375.
- Nei, M. 1987 *Molecular evolutionary genetics*. New York: Columbia University Press.
- Peterson, A. T., Escalante-Pliego, B. P. & Navarro, A. 1992 Genetic variation and differentiation in Mexican populations of common bush-tanagers and chestnut-capped brush-finches. *Condor* **94**, 244–253.
- Pitocchelli, J. 1995 MacGillivray's warbler (*Oporornis tolmiei*). In *The birds of North America*, vol. 159 (ed. A. Poole & F. Gill). Philadelphia, PA: The Academy of Natural Sciences and Washington, DC: The American Ornithologists Union.
- Quinn, T. W. 1992 The genetic legacy of mother goose—phylogeographic patterns of lesser snow goose *Chen caerulescens caerulescens* maternal lineages. *Mol. Ecol.* **1**, 105–117.
- Rising, J. D. & Avise, J. C. 1993 An application of genealogical concordance principles to the taxonomy and evolutionary history of the sharp-tailed sparrow (*Ammodramus caudacutus*). *Auk* **110**, 844–856.
- Rogers, A. R. 1995 Genetic evidence for a Pleistocene population explosion. *Evolution* **49**, 608–615.
- Rogers, A. R. & Harpending, H. 1992 Population growth makes waves in the distribution of pairwise genetic differences. *Mol. Biol. Evol.* **9**, 552–569.
- Rohlf, F. J. 1993 *NTSYS-pc numerical taxonomy and multivariate analysis system*. Setauket, NY: Applied Biostatistics, Inc.
- Saiki, R. K., Gelfand, D. H., Stoffel, S., Scharf, S. J., Higuchi, R., Horn, G. T., Mullis, K. B. & Erlich, H. A. 1988 Primer-directed enzymatic amplification of DNA with a thermostable DNA polymerase. *Science* **239**, 487–491.
- Schneider, S., Kueffer, J.-M., Roessli, D. & Excoffier, L. 1996 Arlequin: an exploratory population genetics software environment. Available from <http://anthropologie.unige.ch/arlequin>.
- Seutin, G., Brawn, J., Ricklefs, R. E. & Bermingham, E. 1994 Genetic divergence among populations of a tropical passerine, the streaked saltator (*Saltator albicollis*). *Auk* **110**, 117–126.
- Seutin, G., Ratcliffe, L. M. & Boag, P. T. 1995 Mitochondrial DNA homogeneity in the phenotypically diverse redpoll finch complex (Aves: Carduelinae: *Carduelis flammea-hornemanni*). *Evolution* **49**, 962–973.
- Slatkin, M. & Hudson, R. R. 1991 Pairwise comparisons of mitochondrial DNA sequences in stable and exponentially growing populations. *Genetics* **129**, 555–562.
- Stanley, H. F., Casey, S., Carnahan, J. M., Goodman, S., Harwood, J. & Wayne, R. K. 1996 Worldwide patterns of mitochondrial DNA differentiation in the harbor seal (*Phoca vitulina*). *Mol. Biol. Evol.* **13**, 368–382.
- Swofford, D. L. 1999 *PAUP\*. Phylogenetic analysis using parsimony (\*and other methods)*, v.4.0. Sunderland, MA: Sinauer Associates.
- Tamura, K. & Nei, M. 1993 Estimation of the number of nucleotide substitutions in the control region of mitochondrial DNA in humans and chimpanzees. *Mol. Biol. Evol.* **10**, 512–526.
- Tarr, C. L. 1995 Primers for amplification and determination of mitochondrial control-region sequences in oscine passerines. *Mol. Ecol.* **4**, 527–529.
- Tarr, C. L. & Fleischer, R. C. 1993 Mitochondrial-DNA variation and the evolutionary relationships in the Amakihi complex. *Auk* **110**, 825–831.
- Webb, T. & Bartlein, P. J. 1992 Global changes during the last 3 million years: climatic controls and biotic responses. *A. Rev. Ecol. Syst.* **23**, 141–173.
- Wilson, A. C. (and 10 others) 1985 Mitochondrial DNA and two perspectives on evolutionary genetics. *Biol. J. Linn. Soc.* **26**, 375–400.
- Zink, R. M. 1994 The geography of mitochondrial DNA variation, population structure, hybridization, and species limits in the fox sparrow (*Passerella iliaca*). *Evolution* **48**, 96–111.
- Zink, R. M. 1997 Phylogeographic studies of North American birds. In *Avian molecular evolution and systematics* (ed. D. P. Mindell), pp. 301–324. San Diego, CA: Academic Press.
- Zink, R. M. & Avise, J. C. 1990 Patterns of mitochondrial DNA and allozyme variation in the avian genus *Ammodramus*. *Syst. Zool.* **39**, 148–161.
- Zink, R. M. & Dittman, D. L. 1993a Gene flow, refugia, and evolution of geographic variation in the song sparrow (*Melospiza melodia*). *Evolution* **47**, 717–729.
- Zink, R. M. & Dittman, D. L. 1993b Population structure and gene flow in the chipping sparrow and a hypothesis for evolution in the genus *Spizella*. *Wilson Bull.* **105**, 399–413.

As this paper exceeds the maximum length normally permitted, the authors have agreed to contribute to production costs.